



HUR Cardio Equipment

VERSATILE SOLUTIONS FOR REHAB AND CONDITIONING



HUR Rehab Treadmill

From treating the most acute neurological or post-operative conditions, to training world-class athletes, the HUR Rehab Treadmill 6700 is ideal solution for **rehabilitative, medical, and sports conditioning therapy.**

Features

- Zero starting speed
- Speed Range 0.16-19 km/h (0.1-12 MPH),
- Speed increment 0.1
- Low step-up height: 14 cm (5'5")
- Reversing belt
- Hand-held Remote Stop-Start Switch
- Incline 15%
- Extended parallel handrails
- Rust-free aluminium frame
- 4 HP continuous duty drive motor
- Orthopedic suspension system
- Interactive contact heart rate crossbars
- User weight capacity 180 kg (400 lbs)



LCD display with a variety of program options

USB Port tickle charge

Accessory tray

Hand-held remote stop-start switch

Contact heart rate bars

Integrated safety lanyard

+ & - Speed and incline buttons

Water bottle holder

Emergency stop

Dimensions

Running surface	Wide 50 cm / 20 in	Length 147 cm / 58 in
Physical footprint	Wide 89 cm / 35 in	Length 193 cm / 35 in

HUR Rehab Elliptical

The HUR Rehab Elliptical 6900 is one of the **most versatile elliptical trainers** available in the market today. **Patients at any athletic level** will find physically holistic benefits and practical rehabilitative functionality on a HUR Rehab Elliptical.



Features

- Orthopedic “gel” footpads provide optimal comfort and relieve foot fatigue.
- Integrated rear step reduces step-up height to 19 cm (7”)
- Resistance level 1 to 20
- Integrated side-frame footrests with non-skid surfaces allow for isolated upper-body workouts.
- Moving handrails feature molded contoured finger grips.
- The patented Rollmentum™ center-drive replicates the body’s natural motion.
- The elliptical brake is 1100 Watts
- Interactive contact heart rate crossbars
- User weight capacity 226 kg (500 lbs)

LCD display with a variety of program options

USB port to charge

Water bottle holder

+&- Effort and speed buttons

Contact heart rate bars



Dimensions

Active footprint

Wide 89 cm / 35 in

Length 193 cm / 76 in

Physical footprint

Wide 89 cm / 35 in

Length 173 cm / 68 in

HUR Rehab Recumbent Bike

The HUR Rehab Recumbent bike 6200 offers a **comfortable training option** for all users. It is built to ensure quality, comfort and durability. It's wide **step-through design** allows for easy access and **wide seat** for superior support.

Features

- ▣ Step-through frame with low step over height
- ▣ Self-powered, no electrical requirements
- ▣ Self-balanced pedals with adjustable straps
- ▣ Forward/backwards seat adjustment with 15 settings
- ▣ Console grip bars and seat grips with contact heart-rate monitoring and resistance control
- ▣ Flywheel weight 6.8 kg (15 pounds)
- ▣ Eddy current magnetic braking system
- ▣ Resistance range 1-20
- ▣ Max User Weight: 160 kg (350 pounds)
- ▣ Transport Wheels



LCD display with a variety of program options

Ventilated and wide back rest

Water bottle holder

Contact heart rate bars

+&- Resistance buttons

USB port tickle charge

Console grip bars



Dimensions

Width	Length	Height	Weight
64 cm	167 cm	133 cm	93 kg
25.31 in	65.74 in	52.20 in	205 lb

HUR Rehab Upright Bike

The HUR Rehab Upright bike 6300 is designed with the rider in mind providing **comfort, convenience and quality**. With multiple handrail positions, it provides one of the most realistic cycling experiences.



Features

- ❑ Self-powered, no electrical requirements
- ❑ Self-balanced pedals with adjustable straps
- ❑ Seat Adjustment: raise/lower with 12 settings
- ❑ Racing style handlebars with contact heart-rate monitoring and resistance controls
- ❑ Flywheel weight 6.8 kg (15 pounds)
- ❑ Eddy current magnetic braking system
- ❑ Resistance range 1-20
- ❑ Max User Weight: 160 kg (350 pounds)
- ❑ Transport Wheels

LCD display with a variety of program options

+ & - Resistance buttons

Contact heart rate bars

Accessory tray

Racing style handlebars

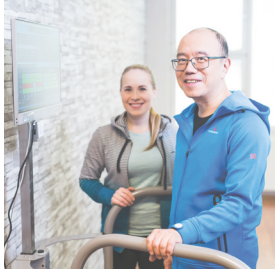
Water bottle holder

USB Port tickle charge



Dimensions

Width	Length	Height	Weight
63 cm	113 cm	148 cm	72 kg
24.72 in	44.56 in	58.11 in	159 lb



PEOPLE OF **DIFFERENT AGES**
AND ABILITIES WORLDWIDE
 ARE #POWEREDBYHUR





Layout planning service

Whether planning a new gym or updating an existing facility, the [HUR layout service](#) helps to visualize ideas and ensure functionality, accessibility and comfort in advance.





YOUR PARTNER FOR LIFELONG STRENGTH

HUR is dedicated to contributing where it is best – providing the best exercise solutions for preventive, rehabilitative and maintaining training – so that you and your customers can keep on performing miracles every day.

CAR-06/2022



Ab HUR Oy Patamäentie 4, 67100 Kokkola, Finland / Tel. +358 6 832 5500 / sales@hur.fi

www.hur.fi